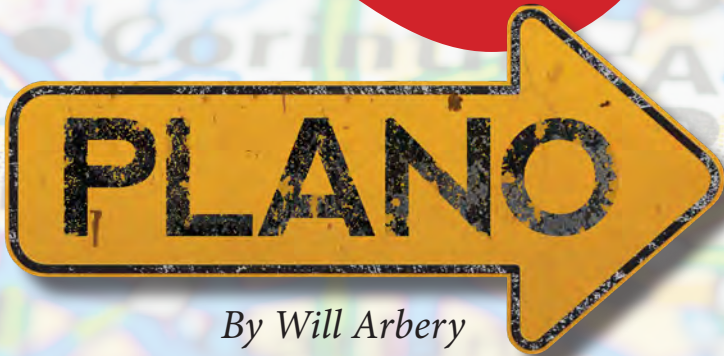




home. truths.



By Will Arbery

Directed by Adil Mansoor

April 1-24, 2022

Quantum  Theatre

Thirtieth Anniversary Season

We are
Proud to Support
QUANTUM THEATRE'S

Plano

APRIL 1 - APRIL 24, 2022



Whiteford | Taylor | Preston

DE ♦ DC ♦ KY ♦ MD ♦ NY ♦ PA ♦ VA

Quantum Theatre

Presents



By Will Arbery

Directed by Adil Mansoor

CAST

in order of appearance

Lisa Velten Smith*..... Anne
Moirra Quigley*..... Isabel
Julianne Avolio*..... Genevieve
Jerreme Rodriguez*..... Juan/John
Tim McGeever*..... Steve
taylor knight..... Faceless Ghost
Cary Anne Spear*..... Mary
Jamie Agnello*..... Genevieve Swing

Scenic Design: Stephanie Mayer-Staley • Lighting Design: Xotchil Musser

Costume Design: Rachel Vallozzi • Sound Design: Aaron Landgraf

Projection Design: Cat Wilson • Director of Production: Michelle Engleman

Technical Director: Cubbie McCrory • Fight Director: Randy Kovitz

Movement Choreographer: taylor knight

*Production Stage Manager: Cory F. Goddard**

Assistant Stage Manager & Wardrobe Supervisor: Jess Levine

COVID-19 Safety Manager: Zev Woskoff

Technical Specialist: Anthony Del Grosso

Assistant to Scenic Designer: Marissa Fisher

**Appearing through an agreement between Quantum Theatre and Actors' Equity Association, the Union of Professional Actors and Stage Managers in the United States.*

The work of the design and production artists is supported by the Philip Chosky Design and Production Fund.

RUN TIME: 87 MINUTES.



I was first introduced to Will Arbery's work by long-time collaborator and dear friend Paul Kruse. In so many ways, Paul is my theatre sibling. Along with Nicole Shero, we grew up as artists together and so it comes as no surprise that he knew Arbery's work would ignite something in me. I am grateful to Paul for knowing me so well; I am grateful to Quantum for trusting me with this work; and I am grateful to Pittsburgh for the opportunity to introduce our audiences to Arbery.

Arbery pulled me into *Plano* with his poetically urgent writing. I'm quite a slow reader, but my first reading of *Plano* flew by. The simple device of using the phrase "it's later" to jump time delighted and mystified me, especially as I sat in quarantine with an abundance of hours and "later" never seemed to come. Page after page, I laughed and laughed and suddenly found myself crying. I suddenly missed my siblings so hard. I felt the geographic distance between us as embodied pain. I still can't exactly tell you why.

I find myself in surprising corners of this play about three sisters in Texas. I may not have been raised Catholic, I may never have gone through a divorce, and I certainly haven't cohabitated with a faceless ghost; but just like Genevieve, I often find myself asking, "Why am I the only one falling apart? Why is everyone allowed to watch?" This play reminds me that so many people are asking this question all the time. This play somehow makes me feel less lonely. This play makes me love my given and chosen siblings even harder. This play makes me grateful for the disastrous miracle of time.

— Adil Mansoor, Director

“ It’s interesting, this need for there to be light at the tunnel’s end.

Or for a play to broadcast that light. I think even a play at all is such a testament to hope. The fact that we’re still making them, still gathering in rooms and sharing air, looking for clues about our fears and desires — what a hopeful thing! To force too much artificial hope on a play seems strange and lazy. Let the hope be weird. Let the hope look different every time. ”

— Will Arbery



Will Arbery is a playwright from Texas + Wyoming + seven sisters.

His play *Heroes of the Fourth Turning* premiered at Playwrights Horizons in Fall 2019 and was a Finalist for the 2020 Pulitzer Prize for Drama and winner of numerous awards, including the 2020 Obie Award for Playwriting, the Lucille Lortel Award for Outstanding Play, the New York Drama Critics Circle Award for Best Play and the Outer Critics Circle John Gassner Playwriting Award. Arbery also won the Whiting Award for Drama in 2020.

His play *Corsicana* will be having its world premiere at Playwrights Horizons in the summer of 2022 in a production to be directed by Sam Gold.

In addition to *Heroes of the Fourth Turning* and *Corsicana*, Will’s other plays include: *Plano* (Clubbed Thumb), *Evanston Salt Costs Climbing* (New Neighborhood), *You Hateful Things* (NYTW Dartmouth Residency), and *Wheelchair* (3 Hole Press). He’s currently under commission from Playwrights Horizons, MTC, and Audible. He’s a member/alum of New Dramatists, The Working Farm at SPACE on Ryder Farm, Page 73’s Interstate 73, Colt Coeur, Youngblood, and Clubbed Thumb’s Early Career Writers Group. His plays have been developed at Clubbed Thumb, Playwrights Horizons, NYTW, The Vineyard, SPACE on Ryder Farm, Ojai Playwrights Conference, Cape Cod Theater Project, The New Group, EST/Youngblood, The Bushwick Starr, Alliance/Kendeda, and Tofte Lake Center.



PITTSBURGH OPERA

BLUE

April 23 - May 1

August Wilson African American Cultural Center

When family and duty collide

pittsburghopera.org/blue

BIOGRAPHIES



Karla Boos (*Artistic Director*) founded Quantum Theatre in 1990. She often directs for the company (recent *Chimerica*) and sometimes performs (upcoming *The Cherry Orchard*). Quantum Theatre has produced many of her original texts, like *Chatterton* (adapted from Peter Ackroyd), *All the Names* (adapted from José Saramago), and her libretto for *The Winter's Tale*, created as a Baroque pastiche opera. Quantum Theatre's work has been featured in national publications like

American Theatre, *Live Design*, and *Stage Directions Magazines*, frequently earns distinction in local publications, and has toured internationally. Boos has won awards locally, including the Carol R. Brown Award and the Pittsburgh Cultural Trust Creative Achievement Award. She is a member of the National Theatre Conference and the International Women's Forum and served as Guest Curator for the 2018 Pittsburgh International Festival of Firsts of the Pittsburgh Cultural Trust. She very much looks forward to an October 2022 project that will celebrate Quantum's 30 years in Pittsburgh, the opera *Idaspe* at the Byham Theater, produced in collaboration with Chatham Baroque, directed by Claire van Kampen.



Adil Mansoor (*Director*) is a theatre director centering the stories of queer folks and people of color. His current project *Amm(i)gone* adapts Sophocles' "Antigone" as an apology to and from his mother. *Amm(i)gone* is co-commissioned by Kelly Strayhorn Theater, The Theater Offensive, and the National Performance Network. Mansoor has developed work with New York Theatre Workshop, Bronx Academy of Arts and Dance, NYU Tisch School of the Arts, and PearlArts Studios.

Directing projects include *Daddies* by Paul Kruse (Audible), *Gloria* by Branden Jacobs-Jenkins (Hatch Arts Collective), *Desdemona's Child* by Caridad Svich (CMU), and *The River* by Jez Butterworth (Quantum Theatre). Mansoor is a founding member of Pittsburgh's Hatch Arts Collective. Fellowships include NYTW 2050, Gerri Kay New Voices with Quantum Theatre, and Art of Practice with Sundance. He is part of the Artist Caucus gathered by Baltimore Center Stage, Long Wharf, Repertory Theatre of St. Louis, and Woolly Mammoth Theatre. Mansoor received his Directing MFA from Carnegie Mellon University.

CAST



Jamie Agnello (*Genevieve Swing*), "who is a human, not a puppet (*New York Times*)," is a curious and creative human who lives in Pittsburgh. Local credits include Trinculo in *The Tempest* (Pittsburgh Public Theater), Mary Shelley in *Midnight Radio's Frankenstein* (Bricolage Production Company), and lots of screen time with Pittsburgh Public Theater's PlayTime series (*Lysistrata*, *The Rivals*, *Much Ado About Nothing*, *The Inseparables*). Jamie has also appeared at Lincoln Center Education, St. Ann's

Warehouse, La MaMa, Dixon Place, University Settlement, and the Park Avenue Armory. Bonus points if you can spot her in her best cult-y orange cashmere in the new hit Netflix series "Archive 81." www.jamieagnello.com

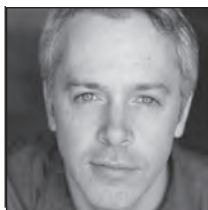


Julianne Avolio (*Genevieve*) is proud to be joining Quantum Theatre on a live stage for this production after appearing virtually in both *Love & Information* and *Constellations*. Most recently, Julianne was in the world premiere of *An Untitled New Play* by Justin Timberlake at City Theatre and is working on another untitled new work to be debuted in June with her husband, John. A massive thank you to Adil and this team for their grace and support during this process. For Mom.



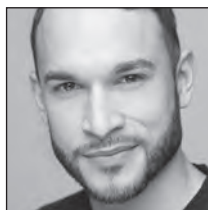
taylor knight (*Faceless Ghost*) is a choreographer, performing artist, sound artist, and facilitator originally from Dallas. They're a graduate of Booker T. Washington High School for the Performing and Visual Arts and Point Park University. taylor, alongside anna thompson, is co-founder/co-artistic director of Pittsburgh-based multidisciplinary performance entity, slowdancer. slowdancer's work has been seen at the John F. Kennedy Center for the Performing Arts, Springboard

Danse Montreal, Carnegie Museum of Art, Place des Arts, Université du Québec à Montréal, Usine C, The Andy Warhol Museum, Kelly Strayhorn Theater, and more. slowdancer was one of *Dance Magazine's* 2018 "25 to Watch" and has been supported by The Foundation for Contemporary Arts Emergency Grant, The Heinz Endowments, and Pittsburgh Foundation Investing in Professional Artists Award, and The Mid Atlantic Arts Foundation Special Presenters Initiative with Dance Place. Currently, with slowdancer, taylor is a resident artist at the Clarice Smith Performing Arts Center at University of Maryland.



Tim McGeever (*Steve*) is excited to be back onstage at all but especially with Quantum Theatre where he previously appeared in *Chatterton*. Tim has appeared locally at the Pittsburgh Public Theater, City Theatre, The CLO Cabaret, West Virginia Public Theatre, Kinetic Theatre, and Bricolage Production Company. Before moving to Pittsburgh, Tim lived and worked in New York where he appeared on and off Broadway as well as touring the country and working

extensively in regional theater. His television work includes appearances on "The Blacklist," "The Good Wife," "Elementary," "One Dollar," and the upcoming "A League of Their Own." Tim played Sheriff Leigh Gray in "Red Dead Redemption 2." He played Devon in "Progression." Tim trained at Juilliard. He has been a proud member of the Actors' Equity Association since the year 2000.



Jerreme Rodriguez (*Juan/John*) was last seen with Quantum Theatre in *The Current War* and in *Looking For Violeta*. Last year, he was in Pittsburgh CLO's *A Musical Christmas Carol*, *As You Like It* with Pittsburgh Classic Theatre, on Heinz Field with CLO in *A Broadway Musical Celebration*, and *The Wizard of Oz*. Other Pittsburgh credits: *Sweat* at Pittsburgh Public Theater; he originated the role of Kenny in *The Double Threat Trio* at CLO Cabaret, where he also played Paco in *Miss Abigail's Guide to Dating, Mating & Marriage*

opposite Paige Davis; *The Book Of Merman*; *Wig Out!* with Pittsburgh REP; *The Little Mermaid*; *We Will Rock You*; and several other shows with Pittsburgh Musical Theater. Texas credits include: *Hello, Dolly!* at Casa Manana in Fort Worth. He's performed

Chicago, *A Little Night Music*, and *Lucky Stiff* for Austin Playhouse; *Aida* with Austin Lyric Opera; and *Cabaret* at Mary Moody Northern Theatre. He originated the roles of Mikael/Raina in *I Like To Be Here* for Theater 167 in New York, and was Greg in the national tour of *A Chorus Line*. He's performed with Alba Flamenco in Pittsburgh, and written, directed, and starred in ballets *Undead* and *The Watchmakers Song* with Ventana Ballet in Austin. He's a librettist in the BMI Lehman Engel Musical Theatre Workshop, and proud alumni of Interlochen Arts Academy and Point Park University.



Lisa Velten Smith (*Anne*) was last seen in Quantum Theatre's *Far Away* and in their first digital venture *Love & Information*. Additional Pittsburgh credits include *A Doll's House Part II*, *Equus*, *Disgraced* (Pittsburgh Public Theater), *We are Among Us*, *Nomad Motel*, *Hand To God*, *Oblivion* (City Theatre). Broadway: *After Miss Julie* (Roundabout Theatre Company). Off Broadway: *Spirit Control* (Manhattan Theatre Club) and *Antony and Cleopatra* (Theatre for a New Audience). Other select credits include:

Hand To God (Theaterworks Hartford), *Greedy* (clubbed thumb), *FUBAR* (Project Y Theatre), *Rabbit Hole* (Premiere Stages), *Paris Commune* (La Jolla Playhouse), and *Absolution* (Steppenwolf Garage). Select TV/Film: "Rust," "Gone," "White Collar," "Law and Order," "Cha Cha Real Smooth" (Apple TV), "Feast of the Seven Fishes," "Proxy," "In Our Nature," among others. Lisa is an assistant professor in the School of Drama at Carnegie Mellon University and a 2019 recipient of the Pittsburgh Performer of the Year award.



Cary Anne Spear (*Mary*) began her acting career in Washington, D.C., as a member of the Arena Stage acting company. In her 10 years of residency at Arena Stage, Cary enjoyed a multitude of roles. After moving to New York, she began performing off-Broadway and in regional theatres. Cary now splits her time between an Ohio home — which she and her husband share with their two wonderful dogs — and her home in Pittsburgh, her beloved hometown, where she

performs and teaches. *Plano* marks her first experience of the powerhouse combo that is Quantum Theatre and Adil Mansoor. She could not possibly be more delighted.



Moira Quigley (*Isabel*) is a Pittsburgh-based actor and educator. Locally, she has worked with Quantum Theatre (*10 for 21*), Hatch Arts Collective (*Gloria*), City Theatre (*The Revolutionists*, four seasons of *Momentum*, Young Playwrights Festival), off the WALL productions (*The Carols*), Pittsburgh CLO (Spark Festival), and more. As an educator, she has worked with extraordinary students across the city, exploring performance and collaboration with Pittsburgh Public Theater's Creative Dramatics program. It's later. I love you.

**"If all the world's a stage, then
all of Pittsburgh is Quantum's."**

BOOM

BRANDING • ADVERTISING • DESIGN

boompg.com

CREATIVE

TEAM



Michelle Engleman (*Director of Production*) is happy to join Quantum Theatre after having worked as Stage Manager with the company during the past decade. Most recently, she was Director of Production for *The Current War*, *An Odyssey*, and *Chimerica*, as well as the Production Manager for *King Lear*, and Stage Manager for the world premiere of *Looking for Violeta*. For the past two years, Michelle held the staff position of Production Manager, as well as Stage Manager, at Opera Orlando. Memorable

credits include: *The Secret River*, a commissioned world premiere; *Die Fledermaus*, first indoor opera production in America during the pandemic; original production of *Carmen* set in 1960's Haiti; *The Girl of the Golden West*, a site-specific production; and the Florida premiere of *All is Calm*. Michelle has a multidisciplinary career with Bricolage Production Company, New Hazlett Theater, Opera Steamboat, Ballet San Antonio, and Pittsburgh Festival of New Music, among others.



Cory F. Goddard (*Stage Manager*) is a graduate of Baldwin Wallace University. Cory's been working in Pittsburgh theater for 16 years, playing with Quantum Theatre, Bricolage Production Company, The REP, Texture Contemporary Ballet, Kinetic Theatre, Kelly Strayhorn Theater, and PICT Classic Theatre. When not working, they can usually be found listening to records or tending to their plants. They'd like to thank Kristin, Karen, Fred, and as always, George.



Randy Kovitz (*Fight Director*) has been staging fights for over four decades, working on and off Broadway and in regional theater, film, and TV. His credits include the Pulitzer Prize-winning Mark Taper Forum/Center Theatre Group productions of *Angels in America* and *The Kentucky Cycle*, among hundreds of other projects. Recent fight direction includes *An Odyssey*, *Chimerica*, and *King Lear* at Quantum Theatre; *True West* at barebones productions; *A Few Good Men* and *Hamlet* at

the Pittsburgh Public Theatre; *Oklahoma* at the Pittsburgh CLO; *The Valkyrie* at Pittsburgh Festival Opera; the world premieres of *Nomad Hotel* at City Theater and *Up and Away* at the CLO Cabaret; and *Ma Rainey's Black Bottom* and *King Hedley the II* for Pittsburgh Playwrights Theatre Company. Past credits include Sir Peter Hall's *Midsummer Night's Dream* and four seasons at the Tony Award-winning Utah Shakespeare Festival. Film fight credits include "The Ballad of the Sad Cafe" with Vanessa Redgrave and Keith Carradine; "The Addams Family" as fencing double for Raul Julia; and "Racing Daylight" with David Strathairn. Randy is also an actor. www.randykovitz.com

The Cherry Orchard

July 8-31, 2022

By Anton Chekhov



For full season details, visit quantumtheatre.com/subscribe



Aaron Landgraf (*Sound Designer*) is a sound designer, theater maker, and musician based in Pittsburgh. He makes work focusing on sound as a reactive and physical environment. As a collaborative artist, he's shown work at MIT Hacking Arts Festival, SFX Festival in New York, Ars Nova's ANT Fest, OUTsider Fest in Austin, Texas, LAPP's LAX Festival, Promenade Music Festival, Denver Underground Music Showcase, FoCoMX Festival, and Starz Film Festival. He holds an MFA in Sound Design from Carnegie Mellon University.



James "Cubbie" McCrory (*Technical Director*) is thrilled to be joining Quantum Theatre to cultivate and collaborate on unique and adventurous theater back in his hometown of Pittsburgh. A native of Washington County, Cubbie is a Point Park University alumnus where he completed undergraduate work in Technical Theatre. Cubbie spent a decade on the road as a technician with National Tours. He worked with Big League Productions, NETworks, and Prather Entertainment

Group on shows such as *Memphis*, *Fiddler on the Roof*, *Blast*, *All Shook Up*, *Wedding Singer*, and *42nd Street*, and was the Production Manager on the 10th anniversary tour of *Footloose*. After 10 years of traveling, he went back to school to complete an MFA in Production Design and Technology from Ohio University.



Xotchil Musser (*Lighting Designer*) is a human person who very much enjoys designing for theatre, dance, installations, and other forms of visual and interactive art. As a child, they lived on an island south of Miami, and now they live in Pittsburgh to pursue an MFA in Lighting Design from Carnegie Mellon University. To view recent credits, digital content, and more information, please visit linktr.ee/xotchilm.



Stephanie Mayer-Staley (*Scenic Designer*) is an Idea Artist whose work ranges from scenic and lighting design to installation, land art, painting, photography, and stone masonry. Originally from Germany, her art often reflects the desire for cross-cultural understanding. Mrs. Mayer-Staley's work has been produced, displayed, and honored in the USA as well as in Germany. Local theatrical designs include *History Boys* and *The House of Bernarda Alba* for the Conservatory Theater,

Welcome to Here for Bricolage Production Company, *The Traveling Song* for the Hiawatha Project, *The Waiting Room* and *The Tipping Point* for CorningWorks, and *Shakespeare's Will* and *Chatterton* for Quantum Theatre.



Rachel Vallozzi (*Costume Designer*) is a costume designer, wardrobe stylist, and personal stylist who is thrilled to be joining Quantum Theatre for her fourth time. She first became interested in a career with clothes when she opened vintage boutique Kharisma Vintage Fashions in 2002. Rachel then moved into dressing actors for over a hundred commercials. She has done costume consulting for Attack Theatre, designed the costumes for "...on being...",

a Staycee Pearl dance project, and for films “Progression” and “Definition Please” available on Netflix. Rachel has an unstoppable passion for helping private clients find a “visual voice” for their unique style and needs and believes that getting dressed in the morning is an opportunity to celebrate each day. You can find out more about Rachel at rachelvallozzi.com.



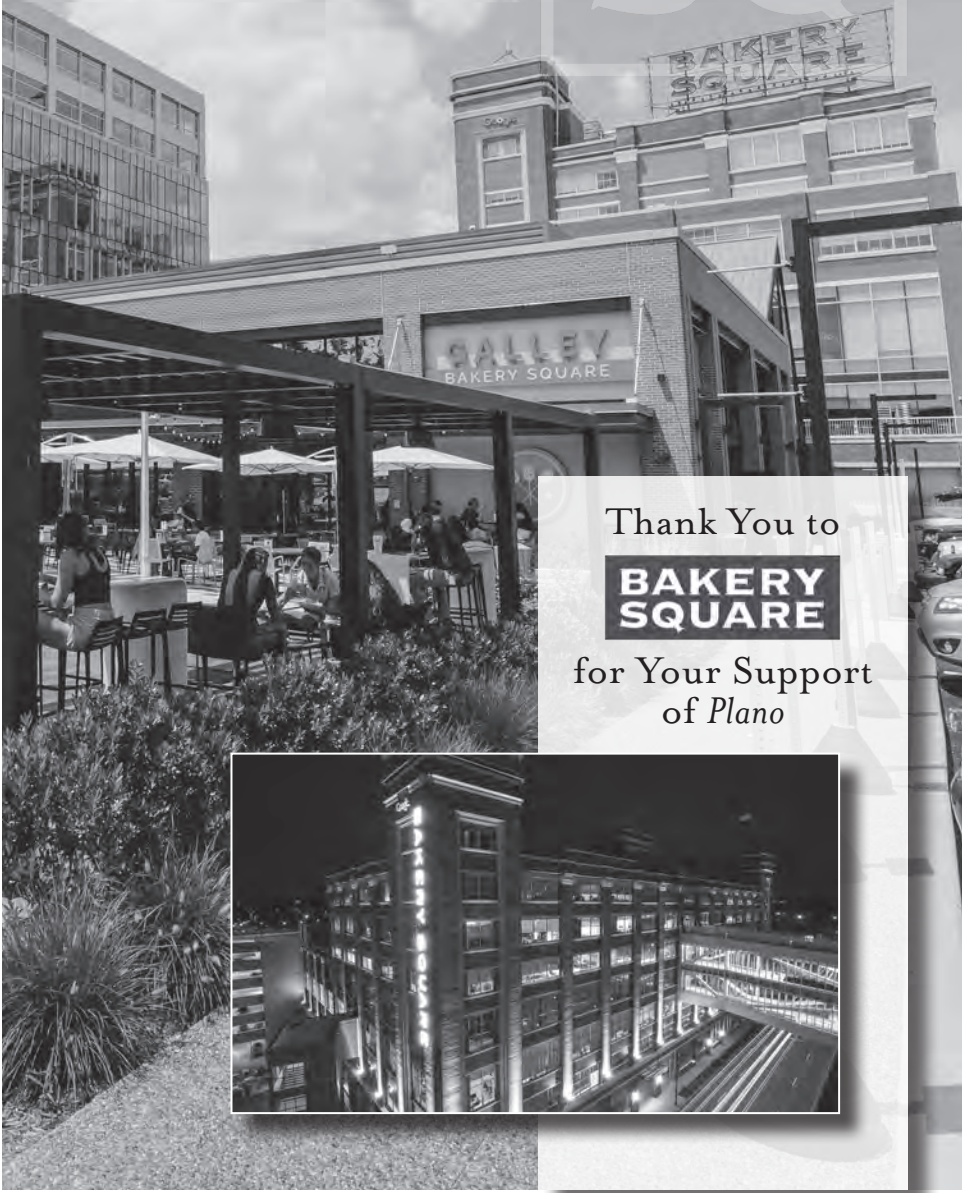
Cat Wilson (*Projection Designer*) is pleased to work with Quantum Theatre for the first time. She is a lighting and projection designer who returned to Pittsburgh to teach at Point Park University. She recently worked with companies such as City Theatre, Portland Stage Company, TheatreSquared, Goodman Theatre, Drury Lane Theatre, Chicago Shakespeare Theater, Joffrey Ballet School, Chicago

Children’s Theatre, Chicago Symphony Orchestra, and many others across the country. She received her MFA in Lighting Design from Carnegie Mellon University and is a proud member of USA 829. www.catwilsondesigns.com

VOLUNTEERS

Annalise Abraham	Chloe Glumac	Rich Mayer	Rose Scilla
Julianne Avolio	Lisa Ann Goldsmith	Kristin McCrory	Don Shrawder
Sierra Baril	Tripta Goyal	John Michnya	Jennifer Shumar
David Bennett	Vinod Goyal	Stephanie Mihailik	Abbie Siecinski
Ken Bolden	Sally Graubarth	Anthony Mongelluzzo	Kathryn Smith
Paige Borak	Donna Green	Susan Mucha	Marlene Smith
Kara Bowen	Jerry Green	Teresa Mueller	Christen Stroh
Cathy Britsch	Teresa Hammond	Sarah Murphy	Skyllarr Trusty
Vanessa Buffry	Janice Hanson	Libby Murphy	John Ubinger
Becky Casne	Debbie Hardin	Gene Nacey	Donald Vukmanic
Virginia Cassiano	Kim Hardin	Michael Nugent	George Walczak
Lourdes Castellanos	T. Hellman	Marilyn Painter	Jana Walczak
Rosemary Coffey	Karen Hill	Shelley Parkerson	Andrea Walczak
Nancy Collins	Elise Hoffman	Wendy Parkulo	Selene Wartell
Judith Cunningham	Patrick Hughes	Joe Paski	Clara Weibel
Robert Cunningham	Lois Hurt	Sarah Perry	Robin White
Barbara Currier	Dennis Jerz	Bryan Perry	Polly Whithorn
Lois DeSilva	Rebecca Kahn	Johanna Perry	Kim Wiesmann
Katie Dodeck	George Kasich	Rachel Pfennigwerth	Wanda Wilson
Ronna Edelstein	Barbara Kelley	Kathleen Pitluga	Phil Wilson
Ron Engel	Meredith Key	Scotty Poepoe	Theresa Wolf
Susan Englert	Anne Kolesar	Jeff Pollock	Jessica Wolfe
Mary Felix	Linda Kubiczki	Andrea Riberi	Pamela Wolff
Janet Felmeth	William Lefler	Betty Riele	Matthew Wolff
Betty Fisher	Abigail Lis Perlis	Laura Ristau	Matt Wolff
Celia Fontenot	Eric Marchbein	Deborah Rosen	Alma Worthington
Karen Ford	Ashley Martin	Magdalena Rubenstein	Pat Yeager
Emily Gallagher	Brenda Maser	Gary Rugel	Alex Zanon
Liam Gannon	Susan Matthews		
Elaine Gelb			

BK SQ



Thank You to

**BAKERY
SQUARE**

for Your Support
of Plano



Quantum Theatre is a company of progressive, professional artists dedicated to producing intimate and sophisticated theatrical experiences in uncommon settings, exploring universal themes of truth, beauty, and human relationships in unexpected ways.

Founded 1990.

BOARD OF DIRECTORS

Carole King, *President*

Jack Brice • R. Mark Cox • Waverly Duck, Ph.D.

Philip Ferland • Scott M. Hare • Stephany L. Hartstirn

Anna Hollis • Tracy Mahood

Patrice Matamoros • Shelly R. Pagac

Beatriz de A. Rocha MD, Ph.D.

Luke Sizemore • Susan Smerd

Susan Harris Smith • Erica Snyder

STAFF

Karla Boos, *Artistic Director*

Stewart Urist, *Executive Director*

Michelle Engleman, *Director of Production*

Cubbie McCrory, *Technical Director*

Jalina McClarin, *Community Engagement Manager*

Ariel Cianfarano, *Marketing and Communications Assistant*

Beth Koehler, *Bookkeeper*

Jennifer Tober, *Director of Education*

Raymae Pulliam, *House Manager*

Alexandra Kornides, *Marketing Intern*

Gabrielle Clark, *Development Intern*

*Quantum Theatre is a member of Theatre Communications Group (TCG),
the national organization for American theatre.*

quantumtheatre.com



QUANTUM THEATRE GRATEFULLY THANKS

Quantum Theatre is supported in part by:

Allegheny Regional Asset District, Bakery Square,
The Benter Foundation, bit-x-bit, LLC,
Jack Buncher Foundation, The Burke Foundation,
Philip Chosky Charitable & Educational Foundation,
Dunkin', Eden Hall Foundation, The Fine Foundation,
Flaherty & O'Hara P.C., Fort Pitt Capital Group,
The Grable Foundation, The Henry C. Frick Educational
Fund of the Buhl Foundation, The Heinz Endowments,
Highmark Blue Cross Blue Shield, Henry L. Hillman
Foundation, Hunter Associates sponsorship made possible
through the generosity of the Clark Hunter Foundation,
Maher Duessel, Meyer Unkovic and Scott LLP,
Peoples – An Essential Utilities Company, The McKinney
Charitable Foundation through the PNC Charitable
Trusts Grant Review Committee, The Fayette S. Olmsted
Foundation through the PNC Charitable Trusts
Grant Review Committee, The National Endowment for the
Arts, Opportunity Fund, Pennsylvania Council on the Arts –
a state agency, The Richard King Mellon Foundation,
The Rubinoff Company, The Shubert Foundation,
UPMC and UPMC Health Plan

SPECIAL PRODUCTION THANKS TO

Attack Theatre	Luke Niebler
Lambros Tshlares	Paul Kruse
Joe Seamans	Kim Weild
Point Park University	James Stamps
Carnegie Mellon University School of Drama	C. Todd Brown

Be Sure to Visit Quantum's Restaurant Partners.

Open late on Friday and Saturday nights!



145 Bakery Square Boulevard
412.254.3630



122 Bakery Square Boulevard
412.866.8256



Michele Kerr

*Let me help you find the home,
where your heart wants to be.*

CELL: 412.889.8249 (PREFERRED)

OFFICE: 412.241.4700 x77

EMAIL: mkerr@neighborhoodrealtyservices.net

WEB: www.MicheleKerrRealtor.com

FB: www.facebook.com/MicheleKerrRealtor

1028 S Braddock Avenue, Pittsburgh, PA, 15218

www.neighborhoodrealtyservices.com

Together we can donate to Quantum Theatre



Hire **Michele Kerr** to be your agent, present this ad when you sign a listing contract and/or Buyer agency agreement and after the closing occurs and settlement is completed, Michele Kerr will donate 10% of the commission check she receives from Neighborhood Realty Services for your side of the transaction to Quantum Theatre in your honor or donated anonymously if requested. (*Only one donation per transaction. Offer valid until 12-31-2022)


WQED CLASSICAL fm 89.3



FOUR WAYS TO LISTEN

89.3 FM WQEDFM.ORG CLASSICAL QED APP SMART SPEAKER

explore on | 

www.wqed.org   

WQED is member supported. wqed.org/donate

CONTRIBUTIONS

Quantum Theatre gratefully thanks individual donors who made gifts
July 1, 2020 through March 17, 2022

THE CREATORS' CIRCLE

Extraordinary supporters who enable Quantum's most ambitious projects

\$5,000 and above

Vivian and Bill Benter
The Burke Family
Carole King and
Charles R. Burke, Jr.
Bruce I. Crocker
Philip Ferland and
Douglas Nolder
The Fine Foundation
David J. March

Morby Family
Charitable Foundation
Mary W. Murrin
in honor of Karla Boos
Torey Naylor and
Richard Beuke
Amy and Allan Philp
Suzanne Quinn and
Michael Weeks

The Juliet Lea Hillman
Simonds Foundation
Susan Harris Smith and
Philip E. Smith
Frederick W. Steinberg
Charitable Foundation
MJ and George Urist
in honor of Stewart Urist

\$2,500 - \$4,999

Jack Brice and Kate Freed
Theresa Colecchia and
Christian Lebiere
Norbert Connors
R. Mark and Susan Cox
Scott M. Hare and
Stacey Dowden
The Grambrindi Davies Fund
of The Pittsburgh Foundation
Marian Finegold
Mary McKinney Flaherty and
Mark Flaherty
Karl F. Krieger

Bette Landish and Mark Winer
Drs. Margaret McDonald and
Russ Schuh
Ruthann Molloy
in honor of Michael Mitnick
Gail and Steve Mosites, Jr.
Dee Jay Oshry and
Bart Rack
Shelly R. Pagac and
Andrew Barnes
The Henry John Simonds
Foundation

Luke and Allison Sizemore
The Susan and Peter Smerd
Philanthropic Fund of the
Jewish Federation of
Greater Pittsburgh
Erica and Jason Snyder
Loretta Stanish and
Rick Russell
Heather and James Terrell
Helene Weinraub and
Geoffrey Clauss

ANGEL

\$1,000 - \$2,499

Anonymous
Cindy Berger and Larry Green
Dr. Kerry Bron and Robert Levin
in honor of Janet Lea
Carolyn and William C. Byham
Ann and James Dugan
Ruthann and Bob Fagan
in honor of Karla Boos
Nancy Glazener
Joyce and Henry Harris
in honor of Slu and Phil Smith

Donna Harsch and
George Loewenstein
Jean Anne Hatler
Anna E. Hollis and Gregg Kander
Carol Lampe
Patrice Matamoros and Fred Baldassare
Barbara Minges and John Shepard
Kathleen Musante and Robert Hoover
Eileen and John Olmsted
Lauren and Daniel Resnick
Sanford N. and Judith R. Robinson
Foundation

Rubinoff-Dunham Family Fund
Chela Sanchez and Kyle Haden
Patricia Schroder
Carol and Gary Schurman
Christine and Duane Seppi
Annette and Preston Shimer
Susan Small and Ken Joseph
Robert and Ian Snapp
Hilary Tyson and Charles Porter
Cate and Jerry Vockley
Janet and Chuck Vukotich

SUSTAINER

\$500 - \$999

Anonymous
Jorunn Allersma
Charlotte and Henry Beukema
Amanda Brodich and Justin Schell
Lynette Brooks
Judith B. and Robert B. Cunningham
Ann and Marty Davis
Ellen and Gilbert DeBenedetti
Kristin and Kerry Diehl
Jeanne and Robert Drennan
Michele Fabrizi
Laryn and Moses Finder
Edward R. Friedman
Paula and Howard Harris
Carol Hochman and William Lafe
Arthur J. Kerr, Jr.
Tom Kissane
Susan Krouse and Al Bowers
Susan and Scott Lammie
Joël Le Gall
Markel Family Philanthropic Fund of
the Jewish Community Foundation
of Greater Pittsburgh
Pam, Ken, and Max McCrory
in honor of Karla Boos
Mary E. McFadden
Karen Adele Miller
Shirley Olander
Kristina Paris and Tom Tarka
Katy and Chris Peplin
William A. Pietragallo
Marylynne Pitz and Mark Weitzman
Fund of the Pittsburgh Foundation
Mary and Chris Rawson
Bob Sendall
in memory of Melinda Handler
Elizabeth Lang and Steve Shapiro
Susan and Jonathan Speicher
Daniel Suders
Katia Sycara and Michael Lewis
Mary and Ron Tambellini
Arlene and Bob Weiner
Roye Werner and George Reid Andrews

SUPPORTER

\$250 - \$499

Anonymous (2)
Tamara Abell
Ed Abes
The Alan L. and Barbara B.
Ackerman Foundation
Linda Argote and Dennis Epple
Joyce and David Bartholomae
Robin J. Bernstein
Sue and Don Bialostosky
Lenore and Manuel Blum
Nancy Bromall Barry and
Robert C. Barry, Jr.

Jessica and Jeffery Brown
Susan and David Brownlee
in honor of Carole King
Marilyn and Howard Bruschi
Clareann Bunker and William Lindgren
Helen and Stephen Casey
Charitable Fund
Leo Castagnari
in honor of Carole King
Kristen C. Clark
Susan and Arthur Craft
Jo Debolt
Waverly Duck
Mary Duquin and Jack Patzer
Ed Feinstein and Pamina Ewing
Andrea Rose Fox and
Kenneth Thompson
Anne Franks
Chrys Gabrich and Jim Aiello
Andrea Geraghty
Keren Gilboa and Jeremy Holzer
in memory of Arlyn Gilboa
Caren Glotfelty
Nachum Golan and Steve Hough
Gabriella Gosman
Betsy and Fritz Graf
Donna and Jerry Green
Donna Hansen and Ralph Kemp
Janice Harrison
Stephany L. Hartstirn
Stuart Hastings
Audrey and Fred Heidenreich
Natalie and Bill Hoffman
Hank Horn
Lori and Alan Hornell
Joan Humphrey
Janis and Jonas Johnson
Russell W. Johnson
Louise Kaczmarek and Philip Hayes
Sandra Kniess and David Solosko
Mary Korytkowski and Bruce Herschlag
in honor of Karla Boos
Lisa Krieg
BJ and Jeff Leber
Hazel Carr Leroy
Mary Anne Lindauer and
Robert Schurko
Stephanie Lonsinger and Joseph Lappa
Carol and Douglas MacPhail
Antonia and Trevor Macpherson
Laura and Robert Marin
Hadassah Max and Jonathan Arnold
Nancy McNary-Smith and Stewart Smith
David Michelmore
Janet and George Miles
Becky Mingo and Dutch MacDonald
David Murray
Jan Myers-Newbury
Stephanie Tristram-Nagle and
John F. Nagle
Milena and Kamal Nigam
Marianne Novy and David Carrier

Peggy and Paul Outon
Dr. Beth Prairie
Keith Recker and James Mohn
Nancy Reese
Mary Catherine and Jason Reljac
Georgiana and Robert Riley
Brian E. Saghy
Merrilee Salmon
Janet Sarbaugh and William McAllister
Leonard Silk
Myrna and Lee Silverman
Narelle J. Sissons
Richard Smethurst
Alice Snyder Charitable Fund
Mark Clayton Southers
Martha Terry
Dr. Ann Thompson
Rita Velten
Mary Rose Walko and Laird Cooper
Stephanie Wallach and
Steven Schlossman
Michael White and Rick Lebeau
Jeffrey L. Wigton
Judy and John Woffington
Robin Ziegler and Clifford Chen

FAMILY

\$100 - \$249

Anonymous (7)
Catherine and Jason Adams
Jean and Bruce Adams
Joan Adibi
Sarah Aerni and Jeremy
Stangle Richardson
Andrea and Steven Alschuler
Alyce Amery-Spencer
Susan Andrade
Susan Ardisson and Joe Decker
David Arndt
Louanne Baily
Karen Baker Stevenson and
Mark Stevenson
Elizabeth Barker
Philip H. Bartels
Dorothy Bellhouse
Carole Bencich
Debbie and Samuel Berkovitz
Mary and Donald Block
Sherry Bloom
Susan Bonello
Margaret and Alec Boright
Paul Bowden and Jordan F. Karp
Travis Breaux
Joan Britten and Mark Perrott
Carol R. Brown
Laurie and Frank Bruns
Anne and James Burnham
Allison Cahill
Jackie Campbell
Yvonne Campos
Jean and Steve Carr

Patricia and Randy Cellone
Anne Chen
Joanne and Woody Chetlin
Trudy Cohn and Ed Leach
Jean-Pierre Collet
Kathleen Connors
Cynthia Cooley
Margaret Cooper
Zavon Cornuejols
Brett Crawford and Sandy Murphy
Mary Ann and David Creamer
Catherine Davidson
William Davies
Mary Denison and Christopher Mark
Charles Denk
Lynn and Chip Desmone
Joan Devine and Mark Miller
Barbara and Mark Dewitt
Hallie and Joshua Donner
Lori and Tom Dowling
Cathy and Dan Droz
Eugene Engels
Beth Evans and Michael Blehar
Linda and Craig Everhart
Mary and Henry Ewalt
Maura Farrell and Larry Feick
Janet Felmeth
Anne Brownlee-Fisher
Edith H. Fisher
Megan Foehr
Margie Forbes
Nancy Foster
Lynne and Mark Frank
Joan+ and Don Franklin
Molly Frounfelter
Mary and Rohan Ganguli
Joan and Stuart Gaul
Sarah and William P. Getty
Roxana Gheorghiu and
Panayiotis Neophytou
Fran and Anthony Gialamas
Kevin Gieder
Betty and Sara Ginsburg
Margaret and Alan Gittis
Carl Goddard
Wendy Goldman and Marcus Rediker
Meg and Matt Dooley
Patricia Halverson and Gregory Cooper
Rob Nyde Handley and John Artale
Marlene Haus
Elizabeth Hawley
Nancy Hazlett and the Hon.
R. Stanton Wettick
Leonie Heystek
Dorothy and William Hill
Susan and Robert Hoehl
Loretta and David Hoglund
Thomas Hollander
Laura Horgan
Vicki and Eric Horne
Maryanne Hugo
Nancy and David Johnson

Barbara and Foster Jones
Mimi Jong
Leila Kern
Michele and Brian Kerr
in honor of John Shepard
Laurie Klatscher and Gregory Lehare
Marian and Enis Koral
Geeta Kothari and Mark Kemp
Paul Anthony Kovach
Kristin Kovacic and Jim Daniels
Barbara Krell and Duncan McBride
Karen Krieger and David Montgomery
Cheryl Kubelick
Betty Lamb
Leadership Pittsburgh Inc.
Amy Lederer
Erika Linke and Henry Pisciotta
Lynn Lipovich
Cheryl and David Longstreet
Charlotte and Randy Lott
William Lovas
John Lovasz
Janet B. MacLeod
Eric Marchbein
Sue Martin
Elizabeth and Graham McIntosh
Susan and Sean McLaughlin
Janice McMannis and Anthony Buba
Christine D. Michaels
Marian G. Michaels
Dr. and Mrs. Eric and Molly Miller
Abby Morrison
Judy Moser
Yoko and Etsuro Motoyama
Michael Natelson
Margaret Naus
Leah Nicolich-Henkin and
Andrew Bloomgarden
Betsy Ochester and Mike Sauter
Aradhna and Grant Oliphant
Shan Overton and Charles Hudson
Lisa Parker and David Sogg
Stefani Pashman
Margaret Pereira
Cynthia Picone
The Pietruszas
Susan Pochapsky and David Ball
John Previs
Lorrie Rabin and Paul Pitts
Marirose and John Radelet
Adi Rapport and John Spiegel
Stephen G. Robinson
Linda and Victor Rodriguez
Pamela Rollings
Dolores and Ralph Roskies
Deborah Rubin
Diane Samuels and Henry Reese
Dianne and Louis Scansaroli
C. Scheftic
Linda Schmandt and Joseph German
Brigitte Schmidt
Judy Schryer

Sharon Semenza and William Robinson
Mabel Shaner
Nancy Simpronio and
Charles Culbertson
Peter C. Simpson
Lori Sisson and Jay Silberblatt
Nellie Lou Slagle
Marlene Smith
Elizabeth and Jonathan Spatz
Susan and Holly Sphar
Janet and Rob Squires
Randi Starr
Sara and John Steelman
Lauren and Richard Stern
Martha and Richard Stoneberg
Laurie Tarter
Louise and John Taylor
Linda and Jay Thier
Barbara Trachtenberg
Elizabeth Trocchio
Cynthia and Thomas Turich
Abigail Vanim
Deborah Walker
Richard Walters
Weching Maria Wang and Andrew Ames
Eileen Weiner
Amy and Lou Weiss
Patricia Weiss
Deborah and Mike West
Eye Wider
Miriam and Stanley Winikoff
Barbara Wolvovitz and John Marx
Teresa and William Wood
Samuel Yousem+
Susan and Michael Zimecki

FRIEND

to \$99

Anonymous (5)
Anonymous
on behalf of Keith McGaha
Anonymous
in honor of Teri and Tony Pyle
Romodore Abdullah
Wali Jamal Abdullah
Carolyn Hess Abraham and Apt
Richard Adasiak
Judy Albert
Marilyn Albert
Jean and Mike Alexander
Jennifer Alexander
Andrew Aloe
Joseph Ambrose
Diana M. Ames and John R. Axtell
Gina Anetakis
Christine Anthony and David Mosey
Mary and Kenneth Antol
Karen Antonelli and Bob Buncher
Mary Lou Arcsott and John Carson
Brittany Artimez
Mark Asselin
Janis and Tom Atkins

Stephen Bagdes	Sarah Cohen	Gretchen and Andy Flowers
Sarah Baird	Susan and William Cohen	John Foley
May Baldwin	Meredith P. Cohen	Lucine Folgueras and Douglas McGill
Lydia Balogh	Rachel Colker	Karen Ford
Martha Banwell	Sean Collier	Paul Foster
Claire Barbetti	Laura Combemale	Andrew Fouts and Justin Wallace
Barbara Barcoucky	Toni and Raymond Conaway	Carol Fraley
Beth and Keith Battaline	Rene Conrad	Clare and Scott Frederick
John D. Bauerlein	Ellen Considerer	Monteze Freeland
Andrew Bechman	Mary Conturo	Mark Freeman
Susan and Stuart Beckerman	Abbey Cooper	Erika Fricke and Daniel Warner
Marilou and Barry Belknap	Alain Corcos	David Fromm
Samantha Bennett	Andrew Cornelius	Dina and Jerry Fulmer
Carol Berger	William Cornell	Mike Gable
Lara Berich	Cornelius Cosgrove	Stephanie Garrison
Lester Berkowitz	Susan and John Cosgrove	Elaine Gelb
Nancy Bernstein and Rocky Schoen	Lucia Covato-Giurgi and Marius Giurgi	Ann and Michael Giazconi
Colleen Gowl Bess	Mary Coyne	JoAnn Giglio
Cristina Beuger	Gary Cravener and Stephen Kohr	Nancy Gippert
Don Bigelow	Steve Cuden	Joanne and Paul Gittelson+
Viola and Michael Bikerman	Joyce Culyba	Cory Goddard
Cathy Bissoon	William Cummings	Frank Golba
Richard Block	Lisa Cunningham	Kenneth Gold
Sandy Block	Lloyd Cunningham	Pamela W. Golden
Scott Bluman	Zelda Curtiss	Jacob Goodman and Sean Shepherd
Debra Bogen and Brian Leshko	Bonnie and Stephan Dake	Mandi and Craig Goodwill
Ken Bolden	Shelley Danko+Day and Brett Danko	David Gotwald
G. Andrew Bonnewell	Suzanne and Richard Danks	Susan and Donald Goughler
Kate Booker	Lance Davidson	Anthony Grace
Maria Boos	Roger S. Day	Jayne Graham
Margaret Borza-Petrie and Phillip Petrie	Michele de la Reza	Megan Graham
Robyn and Sean Brady	Faith Debelius	Terri Greenberg
Dionne and Jonathan Brelsford	John Decker	Marjorie Greenberger
Kent Broadwater	Kate and Dave DeSimone	Barbara and Arthur Grossman
Charlee Brodsky and Mark Kamlet	Dianne Diebold	Virginia and Hans Gruenert
Jennifer Bronder	Emma Diehl	Mandy Guerinio
Maria and Robert Brooks	Kim Dingess	Judith and Norton Gusky
Christa Brown	Sue D'Nihm	Katherine and Penn Hackney
Nicholas Browne	Steven Doerfler	Mary Halford Staffel and Peter Staffel
Kathy Buechel and Fred Egler	Steffi Domike	Jennifer Hallden
Rosemary and Mark Bunker	Heidi and Sam Donovan	Kathleen and Fred Hann
Clareann Bunker and William Lindgren	Thalia Dorwick	Ann S. Harris
Carlos Camacho	Sarah and John Drake	Bridget Harris
Gillian C. Cannell	Lee Ann Draud	Ross Harrison
Paula and Marco Cardamone	Phyllis Dreyfuss	Peggy Hasley
Patricia Carey	Seth Dubin	Amelia Haviland
Russel Lynn Carruth and Bernard D. Goldstein	Linda Tonetti Dugan and Shawn Dugan	Gordon Haw
Jay Carson	Patricia Dunkis	Nancy Hazlett
Evelyn Castillo and Kevin Kraemer	Helen Eaton	Rebecca Hebert
Lindsay Cattell	Roberta and David Egelston	Laurie Heller and Michael Tarr
Marianne Cattell	Sarah and Robert Eldridge	Kathryn and Sam Hens-Greco
Michelle Cattell	Omar El-Gharbawie	Michael and Elizabeth Hepler-Smith
Sangeeta Chakravorty and Tarun Gupta	Jake Emmerling	Valerie Herrero
Frances Chao	Eleanor B. Emmons	Michelle Herwald
Mary Cheever	Michelle Engleman and James Stamps	Judith and David Herzog
Donald Chiarulli	Susan Englert	Sharon and John Hess
Julie and Bruce Childers	Betsy Ensminger	Samm Hodges
Elena and Simon Chiosea	Kim Evans	Marc Hoffman
Ivona Chrzastowska	John Fedele	Nancy Hoffman
Michael and Matthew Churilla	Wynne Fedele	Thomas Hoffman
Michele Clarke	Helen and Richard Feder	Dena Hofkosh
Cheryl Clayton	John Feightner	Rita Hostetter
Jean Clickner and Jon Pushinsky	Peggy Lynn Ferber	Elizabeth Huffman
Rosemary Coffey	Neal Fischer	Gabrielle Hughes
	Sarah Fisher and Vince Ventura	Anthony Iannacchione
	William Flanagan	Charity Imbrie and Jane Barnes

+ Deceased

Dennis Inserra
 Donna Isaac and David Hosmer
 Carrie Iwema Knapp and Rob Knapp
 Kirsi Jansa
 Lonnie Jantsch
 Sharon Jarrett-Brown
 Delanie Jenkins and Andy English
 Kay and John Jennings
 Dennis G. Jerz
 Mark Joensen
 Valerie and Jacob Joseph
 Maura Junius
 Nancy and Thomas Junker
 Joseph Youss Kadri
 Raymond S. Karolak
 George Kasich
 David Kerr and Daryl Criss
 Taya Cohen and Matthew Kesinger
 Bruce Kestner
 Jan Kieilty
 Nita Moots-Kincaid and James Kincaid
 Kathryn King
 Dori Kitch
 Cindy Klink and Rita Drapkin
 Karey Kluesner and Pietro Bajona
 Shannon Knapp
 Laurie Knepper
 Beth Koehler
 David Koenig
 Curtis Kovach
 Mary Krell
 Nancy Kruper
 Richard Kundman
 Sandra LaPietra and Alan Helgerman
 Mehr Latif
 Cynthia Ledbetter
 Sarah Lemanski
 Donna and James Lenkner
 Eric Leslie
 Haleema Levie
 Heather Li
 Jules Lobel
 Jacquelyn and Larry Lobl
 Kathryn Logan
 Lea Ann and Patrick Lope
 Jane and Michael Louik
 Marti Louw
 Carolina Loyola-Garcia
 Michelle and Martin Lubetsky
 Dona and David Luedde
 Beatriz Luna and Dennis Childers
 Timothy Lydon
 James Lynch
 Paul Lyons
 Malic Maat
 Ty Marshall
 Sally Martin
 Margaret Matyjarszewski
 Doty and Glenn Mauney
 Eleanor Mayfield
 Shelley Mayhak
 Louise Mayo
 Jocelyn Mayr
 Mary Ann McAllister
 Barbara McCloskey and Fred Evans
 Charles McCollester
 Carly McCoy

Carol and Fred McCullough
 Bette McDevitt
 David McDougal and Jeffrey Miller
 Tara and Dr. Patrick McElfresh
 Gale McGloin
 Maureen McGranaghan
 Susan McGregor-Laine
 Ann McHoes
 Sheila McKenna
 James McNeel
 Emily Medine and Michael Schwartz
 Susan and Dudley Merchant
 Larry Meyers
 Sam Milford
 Billie Miller and Mark Stahlsmith
 Gilbert Miller
 Joel Miller
 Polly Mills Whitehorn
 Thomas Moore
 Penny and Benoit Morel
 Merle Morgenstern and
 Joseph Friedman
 Sue Morris
 Laurie Moser
 Debbie Moses and George Roberts
 Kathleen Mulcahy
 Joyce and Cliff Mull
 Elizabeth Mullaugh
 Anne Mundell
 Sarah Murphy and Bill Hart
 Pamela Murray and Christopher Horwitz
 Jay Myers
 Mary Myers
 Rise and Daniel Nagin
 Mary Navarro
 Deborah Nichols
 Fred Noel and Rick Fredin
 Maeve Nolan
 Sean Nolan+
 Illah Nourbakhsh
 Clifford Nunn
 Chris Nygren
 Joanna Obuzor
 William O'Driscoll
 Barbara Ondo
 Ginny Packin
 Maya Pantanowitz
 Amy and Anthony Pardo
 Blair Parker
 Shelley Parkerson and Alexander White
 Richard Parsakian
 Mary Paschke
 Maggie Patterson
 Marcy and Jim Pearson
 Gina Peirce
 Matt Pelfrey
 Kathryn and Jeff Pepper
 Rodney Permigliani
 Linda Petrilli
 Mary Phan-Gruber and
 Michael Gruber
 Doug Pickens
 Renee Piechocki
 Diane Pittman
 Jennifer and Michael Pogue-Geile
 Jeffrey L. Pollock, Esq.
 Mary Kay and Oliver Poppenberg

Wren and Steve Price
 Mark E. Puda
 Teri and Antonio Pyle
 Maggie Qualters
 Laura Quinn and Jim Hathaway
 Sara Radelet
 Tamara and Robert Radocaj
 Michele Rawson
 Paul Ray
 Diana Rayzberg
 Dennis Rea
 William Recker
 Stuart Redshaw
 Sandra Reeper
 Thia Reggio
 Bill Reier
 John Reilly
 Lauren and Dan Resnick
 Marc Rettig
 Andrea Riberi
 Betty Rieley
 Leslie Riley and David Pankiewicz
 Rahel Ringger and David Mortensen
 Jan and Douglas Ripper
 Harriette and Ronald Roadman
 Anne Robb
 Kelsey Robinson
 Patty Robinson
 Shelly Roisen
 Beth and Kenneth Rom
 Deborah Rosen
 Helen-Faye and Ray Rosenblum
 Marcia Rosenthal
 Donna Rosenwasser
 Louisa and James Rudolph
 Rachel Rue
 Mona and Sam Rush
 Marilyn and John Russell
 Elaine Sadowski
 Sergiu Sanielevici
 Roshni Santiago
 Steven Sarfin
 Colette Satler
 Francesca Savioa
 Lisa Scales
 Kevin Scanlon
 Lissa Scearce
 Edward Scheid
 Jeff Scheraga
 Diane Schneider and Nancy Foley
 Monica Schneider and Alan Abes
 Joliane Schroeder
 Theresa and Ted Schroeder
 Phil Schuller
 Rose Scilla
 Elizabeth P. Seiders and
 Lyndall J. Huggler
 Veronica Seitz-Norman
 Rita and Morton Seltman
 Heather Sendera
 Felipe Pruneda Senties
 Cynthia Sheehan
 Sorley Sheinberg
 Stevie and William Sheridan
 Joy and David Shussett
 Brandon Sink
 Janet Slifkin

+ Deceased

Christine Smith
Cotter Smith
Janet and Tom Smith
Randy Smith
Linda Price Sneddon and
Scott Sneddon
Rosa Snyder-Boyd
Sandra and Loren Sobel
Rhoda Sommer and Donald Friedman
Ingrid Sonnichsen
Marlene Speranza
Gloriana St. Clair
Micheline Stabile
Nevena and Michael Staresinic
Judith and Jerold Starr
Rebecca Steadman
Chris Steffy
Vilja K. Stein
Linda Strasburg
Kristina Straub
Danielle Strobel
Richard Strojan
Myrna Pollock and Charles Strotz
Bayh and Matt Sullivan
Harmony Sullivan and Justin Cummings
Irene Surmik
Jennie Sweet-Cushman
Stephanie and Timothy Sweetser
Merrily Swoboda
Stephanie Szakal

J Tamburo
Susan Thibadeau
Christine and Frederick Thieman
Jean W. Thomas
Robert R Thompson
Susan Todhunter
Mark Tomczak
Amy Tonti
David Trimmer
Kelly Trumbull
Rosemary Trump
Eva Tumiel-Kozak
Holly and Alan VanDine
Lisa Velten-Smith and Andrew Smith
Christopher M. Vincent
Regine Vital
Lauren Vitalie
Ralph Vituccio
Scott Vogel
Victor Vrabel
Jana and George Walczak
Pat Walton-Donalies
Thomas Wanko
Dorothy Washington
Margaret and Peter Watt-Morse
Andrea Weinstein
Alison Weisgall and Campbell Robertson
Jill M. Weiss
Ronald Weisser
Laura Wenneker and Michael Morrill

Annette Werner
Susan and Raymond Werner
Judy Wertheimer
Barbara and Robert Wheatall
Margaret and Fred Whelan
Robin W. White
Maxine Willis
E. Philip Wilson
Frances Wingard
Raquel Winnica Young and Lenny Young
Christine Wolfe and Howard Aikens
Ellen Wolfe
Sharyn and Herbert Wolfson
Hui-Lee Wong
Darlene Wood
Richard Wood
Sara Shutkin and Scott Woskoff
Kathleen Wright
Dr. Judith Yanowitz and
Dr. Harry Hochheiser
Pat Yeager
Carol Yoannone
Susan Yohe
Roger Zahab
Mary Ann and Albert Zajko
Paula Zawadzki
Marilyn Zawoyski
Sharon Zemel
Nancy Zions
Richard Zollinger

Every effort was made to avoid errors. However, if your gift is reported inaccurately, please know that your support is appreciated. Also, please let us know by emailing surist@quantumtheatre.com or calling 412-362-1713 so that we may correct our records.



FORT PITT[®]
CAPITAL GROUP

YOUR FUTURE
IS OUR FOCUS



MAKE THE MOST WITH YOUR MONEY

TALK WITH AN ADVISOR

(412) 921-1822 | FORTPITTCAPITAL.COM

2021 Q BALL BENEFIT SUPPORTERS

CHAIRS

Waverly Duck • Amy and Al Philp • Jessica Quinn-Horgan and John Horgan

SPONSORS

Lead Sponsors

Vivian and Bill Benter • Carole King and Chip Burke

Angels

Highmark Blue Cross Blue Shield • Flaherty & O'Hara P.C. • Fort Pitt Capital Group

Philip Ferland and Doug Nolder • Gail and Steve Mosites, Jr.

Shelly R. Pagac and Andrew Barnes • Amy and Al Philp

Supporters

bit x bit • The Rubinoff Company

Maggie McDonald and Russ Schuh • Kristina Paris and Tom Tarka

VENUE

Roselea Farm

Bass & Bennett Trading Co.

FOOD & BEVERAGE

Chef Jamilka Borges

Wild Child

Dreadnought Wines

Redstart Roasters

OTHER IN-KIND SUPPORT

Approved Toilet Rentals

N Stuff Music

Sarris Candies, Inc.

MEDIA SPONSOR

BOOM Creative

AUCTION SUPPORTERS

12 Peers Theatre

Arcade Comedy Theater

ASCEND

Attack Theatre

Bar Marco

Marie Benedict

Brew Gentlemen

Bricolage Production Company

The Carnegie Museums

Chatham Baroque

Chestnut Hills Dental

City Theatre Company

Contemporary American

Theater Festival

Contemporary Craft

Ron Copeland

Marianne Cornetti

CORNINGWORKS

Bruce I. Crocker

Casey Droege Cultural Productions

Waverly Duck

East End Brewing Company

The Golden Bone Pet Resort

Heinz History Center

Hotel Indigo Pittsburgh East Liberty

Kelly Strayhorn Theater

Lo Bar Cocktail Services

Los Sabrosos Dance Company

Patrice Matamoros and

Fred Baldassare

New Place Collaborations

off the WALL productions

PICT Classic Theatre

Pittsburgh Arts & Lectures

Pittsburgh Festival Opera

Pittsburgh Glass Center

Pittsburgh New Music Ensemble

Pittsburgh New Works Festival

Pittsburgh Opera

Pittsburgh Public Theater

Pittsburgh Savoyards

Pittsburgh Steelers

Quantum Theatre Board Members

Resonance Works

Rivers of Steel Heritage Corporation

Soju

Voodoo Brewery

The Wheel Mill

WildCard

Zev Woskoff

LAND ACKNOWLEDGMENT

Quantum Theatre acknowledges that our productions take place in Dionde:gâ, the Seneca language name for the Pittsburgh region.

We work and create art on the unceded, ancestral lands of many Indigenous peoples including the Seneca Nation members of the Haudenosaunee (*hoe-dee-no-SHOW-nee*) Confederacy, the Lenape (or Delaware), the Shawnee, and the earlier Adena, Hopewell, Monongahela and others. We are mindful that our work here is possible because the land and lives of people native to this place were stolen.

Through this acknowledgment, we invite you to join us in paying respect to the elders both past and present. We encourage you to visit the Council of Three Rivers American Indian Center to learn more and support their work: <http://www.cotraic.org/>

Special thanks to City Theatre Co-Artistic Director Clare Drobot for providing her research for this land acknowledgment.

QUANTUM THEATRE, IN COLLABORATION WITH CHATHAM BAROQUE,
PUTS GLORIOUS BAROQUE MUSIC IN THE HANDS OF WORLD-CLASS MASTERS.

IDASPE

OCTOBER 7-15, 2022
BYHAM THEATER

Created by **Chatham Baroque** and **Claire van Kampen**
from **Riccardo Broschi**



Directed by **Claire van Kampen**




Starring
Vivica Genaux and **John Holiday**


leading a cast including

Grammy Award-winning **Karim Sulayman**, **Pascale Beaudin**,
Amanda Lynn Bottoms, **Shannon Delijani**, and **Wei En Chan**.

The story follows two children from the post-war Middle East to Naples, where they are separated in an underworld of organized crime. Grown to adulthood, the siblings become powerful bosses of two opposing clans and come face-to-face in an escalating war. True lovers are mere bargaining chips, boss and pawn alike held captive by their circumstances and emotions. Might they find that all-consuming power and violence are not the only means to survive?

Quantum  Theatre

Chatham Baroque

 **PITTSBURGH
CULTURAL
TRUST**

For full season schedule, visit
[quantumtheatre.com/subscribe](https://www.quantumtheatre.com/subscribe)

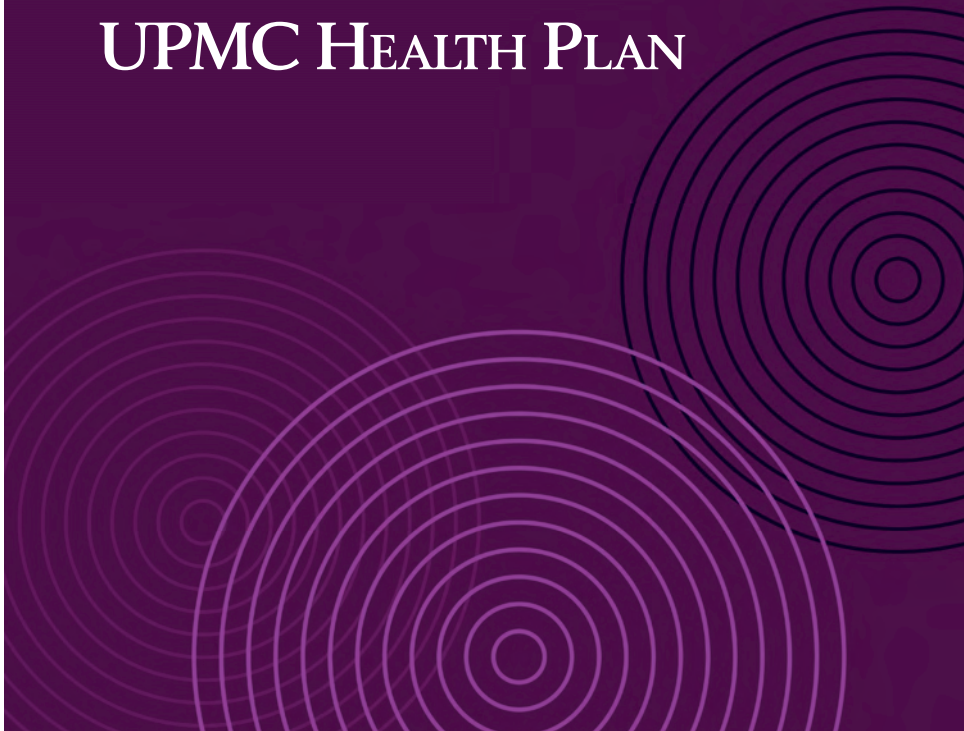
Subscribe by May 1, 2022
and guarantee your prime
Orchestra seat for *Idaspe*.

Never underestimate
the power of a great
performance.

We are proud to support 30 years of the Quantum Theatre.

UPMC LIFE
CHANGING
MEDICINE

UPMC HEALTH PLAN



Calliope presents

The Way Down Wanderers



Kelly Strayhorn Theater
Saturday, April 30,
7:30 pm

Tickets: \$35 / \$18 (*student*)
calliopehouse.org
412-361-1915

**"#1 of 10 New Artists You Need
to Know." *Rolling Stone Country, 2019***

**"Somewhere on the spectrum
between Old Crow Medicine Show
and Mumford and Sons lies the
spirited bluegrass based artistry
of The Way Down Wanderers..."**

Associated Press

"We are really liking this."

Ricky Ross, BBC Radio Scotland

CALLIOPE

Kelly Strayhorn
THEATER



Flaherty & O'Hara supports
Quantum Theatre in its production
of *Plano*.

*A Liquor Law Boutique Practice, Counseling
the Chefs and Restaurateurs Leading Pittsburgh's
Restaurant Renaissance.*



Flaherty & O'Hara
PROFESSIONAL CORPORATION

The Liquor Lawyers

Pennsylvania Based • National Reach
PITTSBURGH • HARRISBURG • PHILADELPHIA

www.flaherty-ohara.com • 866-4-bevlaw